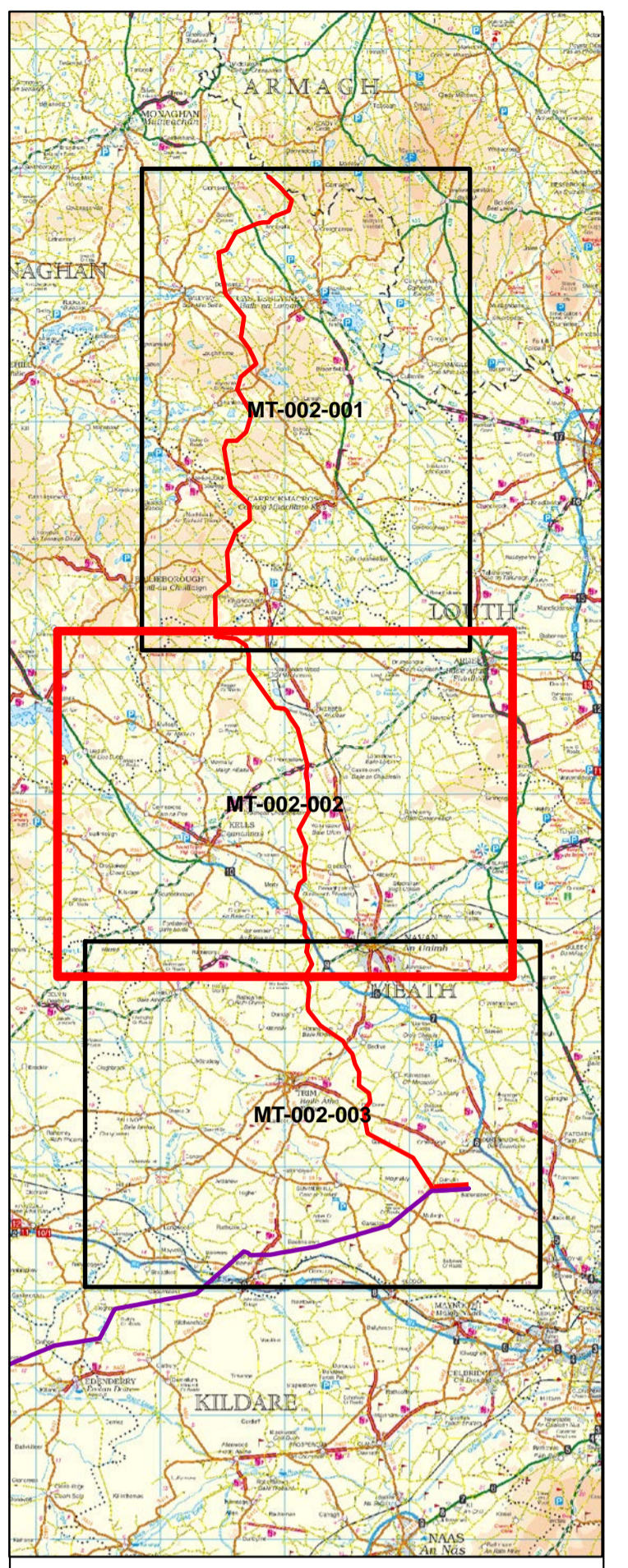
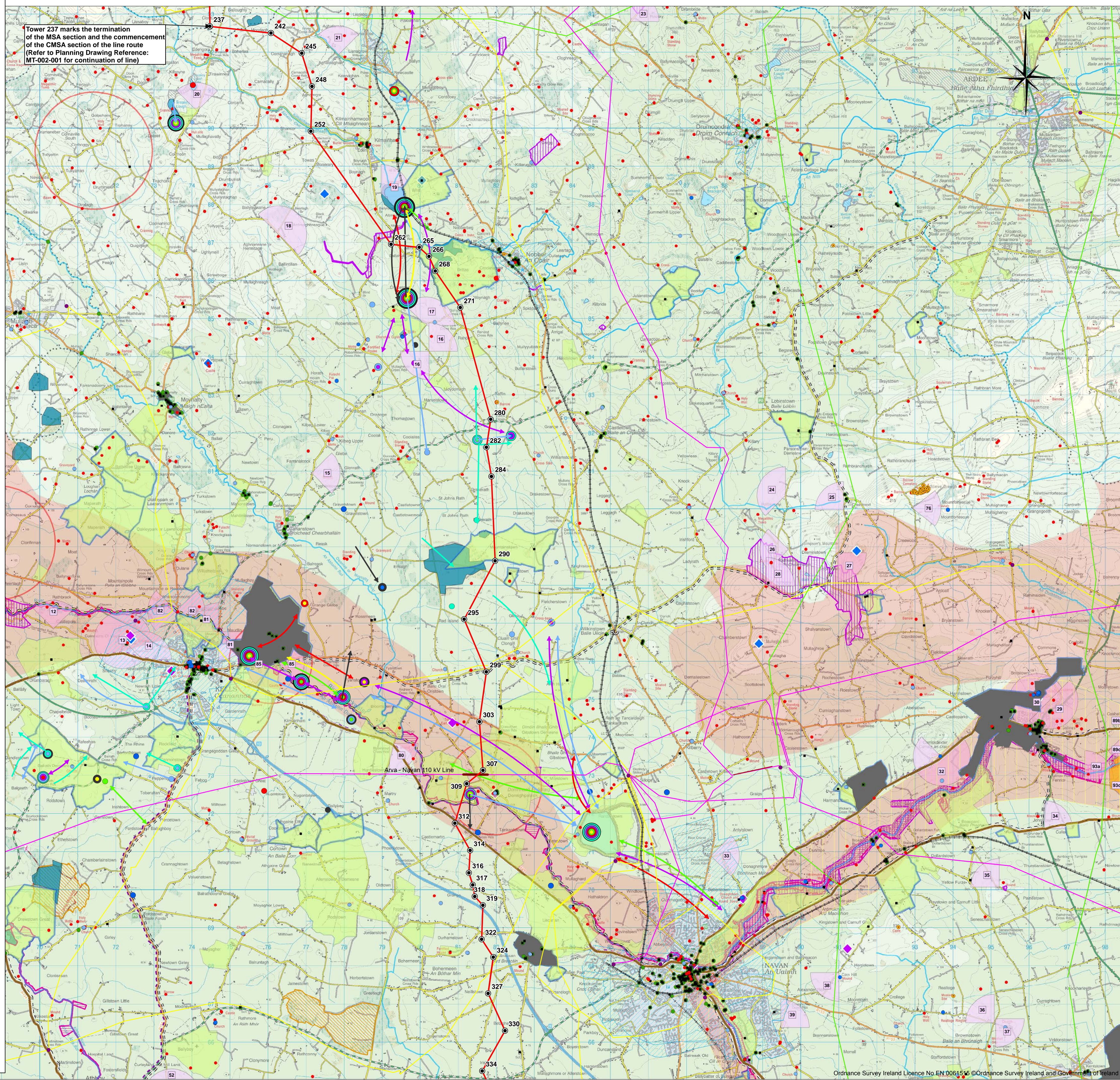


Legend

- Proposed Angle Tower Location
 - Proposed Line Route
 - Proposed Alterations to Existing Electricity Line
- Ecology**
- Swan flight lines 2007/08
 - Swan flight lines 2008/09
 - Swan flight lines 2009/10
 - Swan flight lines 2010/11
 - Swan flight lines 2011/12
 - Swan flight lines 2012/13
 - Swan flight lines 2013/14
 - Historical Swan Site
 - Swan Site recorded in Winter Survey Period 1: 2007/2008
 - Swan Site recorded in Winter Survey Period 2: 2008/2009
 - Swan Site recorded in Winter Survey Period 3: 2009/2010
 - Swan Sites recorded in Winter Survey Period 4 : 2010/2011
 - Swan Site recorded in Winter Survey Period 5: 2011/2012
 - Swan Site recorded in Winter Survey Period 6: 2012/2013
 - Swan Site recorded in Winter Survey Period 7: 2013/2014
 - Sensitive Ecological Receptors
 - Natural Heritage Area (NHA)
 - Proposed Natural Heritage Area (pNHA)
 - Special Area of Conservation (SAC)
 - Special Protection Area (SPA)
- Geology**
- Geological Interest Site (identified by GSI)
 - Geological Interest Site (surveyed by GSI)
- Landscape**
- ◆ Boyne Valley Sites
 - ◆ Meath Landmarks
 - Draft Landscape Conservation Area
 - Meath Landscapes of Exceptional Value
 - Meath High Sensitivity Landscape
 - Areas of Potential Tourism
 - Scenic Viewpoints for County Meath
- Infrastructure**
- 38 kV line
 - 110 kV line
 - 220 kV line
 - National Road
 - Motorway
 - Gas Pipeline – Considered but not shown
 - East-West Interconnector
 - Windfarm
 - Gas Stations – Considered but not shown
 - Electricity Station
- Cultural Heritage**
- Monuments Covered by Preservation Orders
 - National Inventory of Architectural Heritage (NIAH)
 - National Monuments
 - Potential National Monument
 - Record of Protected Structures (ROI)
 - Record of Monuments and Places(RMP)/Sites and Monuments Record (SMR)
 - Architectural Conservation Area (ACA)
 - Demesne Landscapes and Historic Gardens
 - Bru na Boinne
- Miscellaneous**
- Railway
 - Planned Navan Line (Disused Railway Track)
 - Boyne Valley Driving Route
 - Meath Existing Driving Routes
 - Meath Existing Paths and Cycling Routes
 - Meath Potential Paths and Cycling Routes
 - Major river
 - Lake/Lough
 - Urban areas

Tower 237 marks the termination of the MSA section and the commencement of the CMSA section of the line route (Refer to Planning Drawing Reference: MT-002-001 for continuation of line)




NOTES:
 1. Transmission line and towers not to be scaled
 2. Discovery Series tiles used: OS2628, OS2626, OS2826, OS2828

0 0.5 1 2 3 4
 Kilometres

| Issue | Date | Description | By | Chkd. |
|-------|----------|-------------|------|----------|
| D | APR 2015 | Issued | G.F. | D.G.M.N. |
| C | DEC 2014 | Issued | G.F. | D.G. |
| B | JUL 2014 | Issued | M.N. | D.G.M.N. |
| A | JAN 2014 | Issued | M.S. | D.G.M.N. |

Client:



Project:

NORTH SOUTH 400 kV INTERCONNECTION DEVELOPMENT

Title:

**MSA Line Route Map - Constraints
 1:50,000 Planning Drawing
 Sheet 2 of 3**

Scale @ A1: 1:50,000

Prepared by: G.Fil
 Checked: O.McAlister
 Date: April 2015

Project Director: Damien Grehan

Planning Dwg Ref: MT-002-002



Consulting, Civil and Structural Engineers,
 Block 10-4, Blanchardstown Corporate Park,
 Dublin 15, Ireland.
 tel: +353-(0)1-8030406
 fax: +353-(0)1-8030409
 e-mail: info@tobin.ie
 www.tobin.ie

Drawing No.: 6244-1000

Issue: D